

Swisstouches


La Luna Resort
NHA TRANG



Marina Bay Sands, the symbol of Singapore, attracts millions of tourists every year. Its hotel-resort system achieves 95% occupancy rate in a whole year, bringing attractive profitability to the wise investors.



Burj Al Arab - A new symbol of Saudi Arabia, a new world wonder captivates the hearts of millions of tourists every year. This seafront hotel also offers the promising potential for hotel business.

The moonlight gently reflects on Nha Trang Bay, each day witnessing the steady transformation of the coastal city. Here, a luxury 5-star condotel project managed by the Swiss Hotel Management Group - **Swisstouches Hotels & Resorts** is shining as a diamond on the beach, to become a new icon of modern Nha Trang.

Where every story of a world-class recreation experience with full of 5-star amenities and dedicated service of **Swisstouches** will help all visitors enjoy the peaceful days as a king.



THE NEW ICON OF
MODERN
NHA TRANG



THE BAY-SIDE MASTERPIECE EMBODIES THE FINEST

Located at the foot of majestic Mount Co Tien, along the golden Tran Phu – Pham Van Dong boulevard, **Swisstouches La Luna Resort** proudly grows on the sunny Nha Trang Bay with three 36-floor towers - a new icon of five-star recreation in Swiss style and attractive investment opportunities in a long term.









STRATEGIC LOCATION OF BUSINESS CONNECT

Swisstouches La Luna Resort is like a diamond shining on the Nha Trang Bay, where has prosperous and sacred feng shui. From here visitors can easily go to the famous attractions of the poetic coastal city.

Only 5 km from the city center, next to the first international marina of Vietnam – Ana Marina, **Swisstouches La Luna Resort** owns a majestic panorama view of Nha Trang Bay.

Especially, just by a few steps, visitors can experience Ana Marina yachts to discover Nha Trang islands in a few minutes.

Located at the golden place of Nha Trang, an ideal ‘feng shui’ position, **Swisstouches La Luna Resort** creates attractive and easy exploring experiences for visitors:

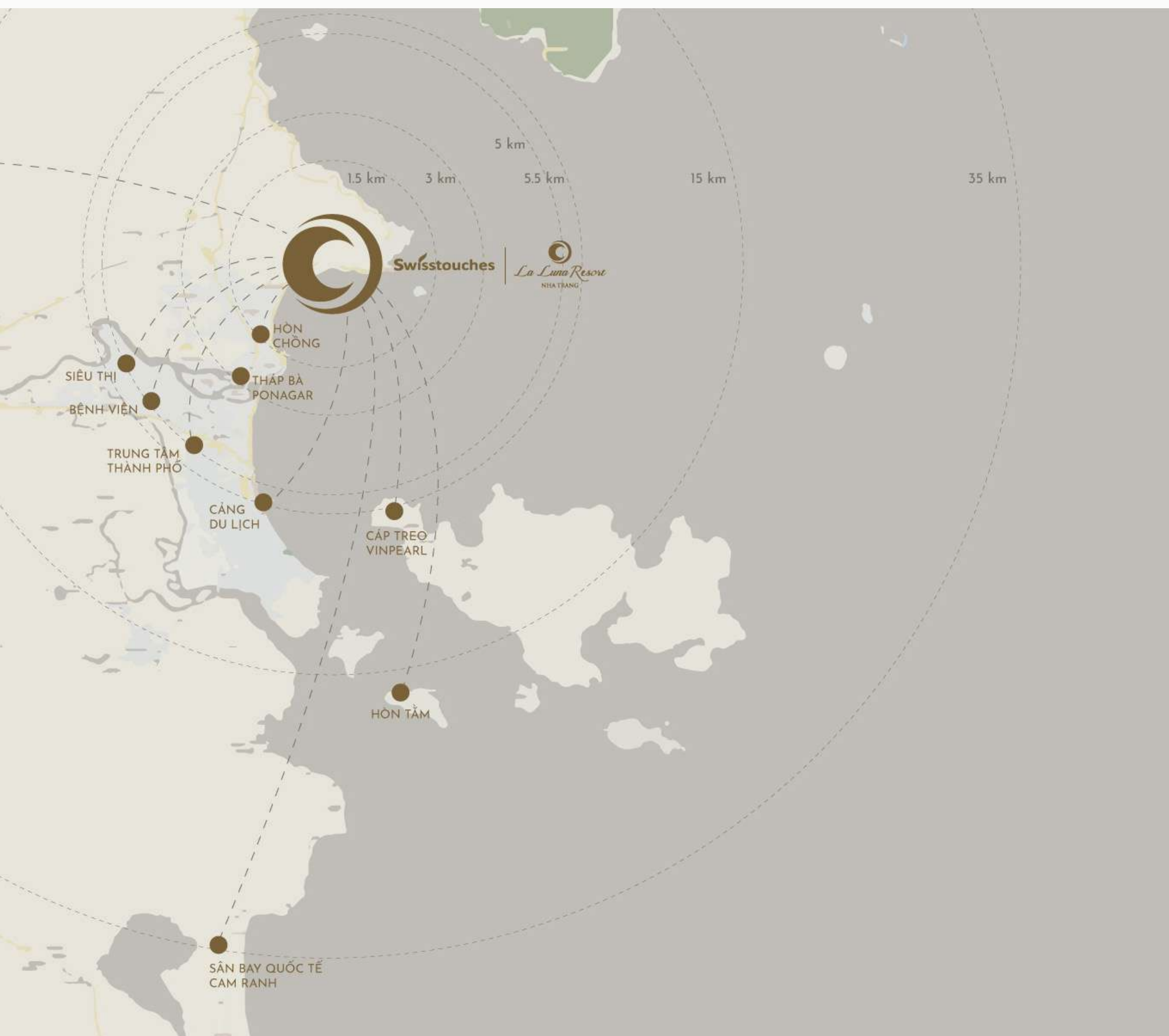
◇ Cam Ranh International Airport: 58 mins (35 km)

◇ City Centre: 14 mins (5 km)

◇ The Po Nagar Cham Towers: 11 mins (4,3 km)

◇ Hon Chong: 7 mins (2,9 km)







TOP-NOTCH AMENITIES

Swisstouches La Luna Resort makes an impression of a leading resort destination in Nha Trang islands paradise, where top-notch five-star facilities, trade and entertainment converge.

THE FIRST HELIPORT IN NHA TRANG	13
ANA MARINA - THE WORLD-CLASS MARINA	15
ROYAL CASINO - THE ENTERTAINMENT PARADISE OF THE ELITE	17
UNIQUE SKYBAR - THE EVERLASTING GLOW	19
FIVE-STAR INTERNATIONAL HOTEL STANDARD	21
THE KIDS CLUB	23
INFINITY POOL - BE ONE WITH THE OCEAN	25
SPA & GYM CENTER - CHERISING EVERY MOMENT	27
ELITE LIVING SPACE	29





THE FIRST HELIPORT IN NHA TRANG

For the first time in Nha Trang, two heliports with the height of +144.500m and 13m radius are built at the 35th floor of Luxury and Platinum Tower of **Swisstouches La Luna Resort**. There is exclusive service for EC125 helicopters accommodating up to 6 passengers.

It is the classy symbol for the elite.





ANA MARINA

THE WORLD-CLASS MARINA



Located next to the first world-class Ana Marina in Vietnam, tourists stay at **Swisstouches La Luna Resort** will have the opportunity to enjoy and be immersed in the vibrant festive atmosphere of cultural events, sports or sailing.

Each season has been welcoming thousands of domestic and international tourists to visit and experience at the marina. It will be a great opportunity for hospitality business at **Swisstouches La Luna Resort**.



ROYAL CASINO

THE ENTERTAINMENT PARADISE OF THE ELITE



Within an area of 1,625.2 square meters at the 4th floor of Diamond Tower, Royal Casino has state-of-the-art equipment and unique design style creating contemporary East-meet-West space. This place promises to be the destination of guests who love the most exciting and thrilling entertainment activities in Vietnam.





UNIQUE SKYBAR THE EVERLASTING GLOW

Inspired by huge waves rolling across the ocean surface and the wind tearing white moonlit spray from their peaks, the unique restaurant chain and Sky Bar on the 34th floor of three towers are built on an area of over 2,000 square meters. It is the ideal destination for an exciting and vibrant night life. It will be an unforgettable moment for guests to immerse in the romantic scene of Nha Trang coastal city when the night falls. Together with 5-star restaurants, high-class conference rooms, and Executive Lounge, each day at **Swisstouches La Luna Resort** is like a day in imperial place.



HIGH-CLASS RESTAURANT CHAIN



ASIAN RESTAURANT

Inspired by Western architecture and indigenous cultural imprints, the high-class Swiss-style restaurant chain along with Vietnamese restaurants, on the second and third floors of three towers, will bring to diners the experience of cuisine quintessence around the world, the preservation of traditional flavors and the dedicated service in Swiss way by **Swisstouches**.

Let ocean vista embrace the soul and savor the tasty flavors of Michelin-starred dishes at **Swisstouches La Luna Resort**, the diners will feel like being in truly European paradise.



VIP ROOM

FIVE-STAR INTERNATIONAL HOTEL STANDARD



Dedicating to every single detail is the 5-star service of Swisstouches brands. Guests will have the opportunity to experience, enjoy the highest level of service, from hotel accommodation, airport shuttle, conference room rental to medical services, health care, etc.

With top-notch quality service of Swisstouches, guests at **Swisstouches La Luna Resort** can completely enjoy the peace and relaxation during their holiday here.



KIDS' CLUB

“Swisstouches” - Real authentic Swiss services brings thoughtfulness in everything we do, to every individual staying with us. Family guests with children needless to worry at **Swisstouches La Luna Resort** as we have an entire world dedicated to your little angels.

The 634 m² kids' club at the Platinum tower stands out with features such as an active sports galore, a creative play area with smart toys for your children. Parents will be free to switch off and enjoy moments of relaxation knowing their children are safe, happy and surrounded by attentive and engaged staff.





INFINITY POOL BE ONE WITH THE OCEAN

Aqua Bay's unique infinity pool located at the 5th floor between the Luxury tower and the Diamond Tower is seen as a symbol of **Swisstouches La Luna Resort**.

Indulge in the waters overlooking the stunning Nha Trang Bay to feel one with the ocean and nature, relaxing in serenity and cherishing every moment.





CHERISING EVERY MOMENT

SPA

With a friendly, professional, truly 5 star staff, the Spa, Sauna services and treatments at **Swisstouches La Luna Resort** will awaken all your senses, regenerate your energy and rejuvenate your appearance.





FITNESS CENTER

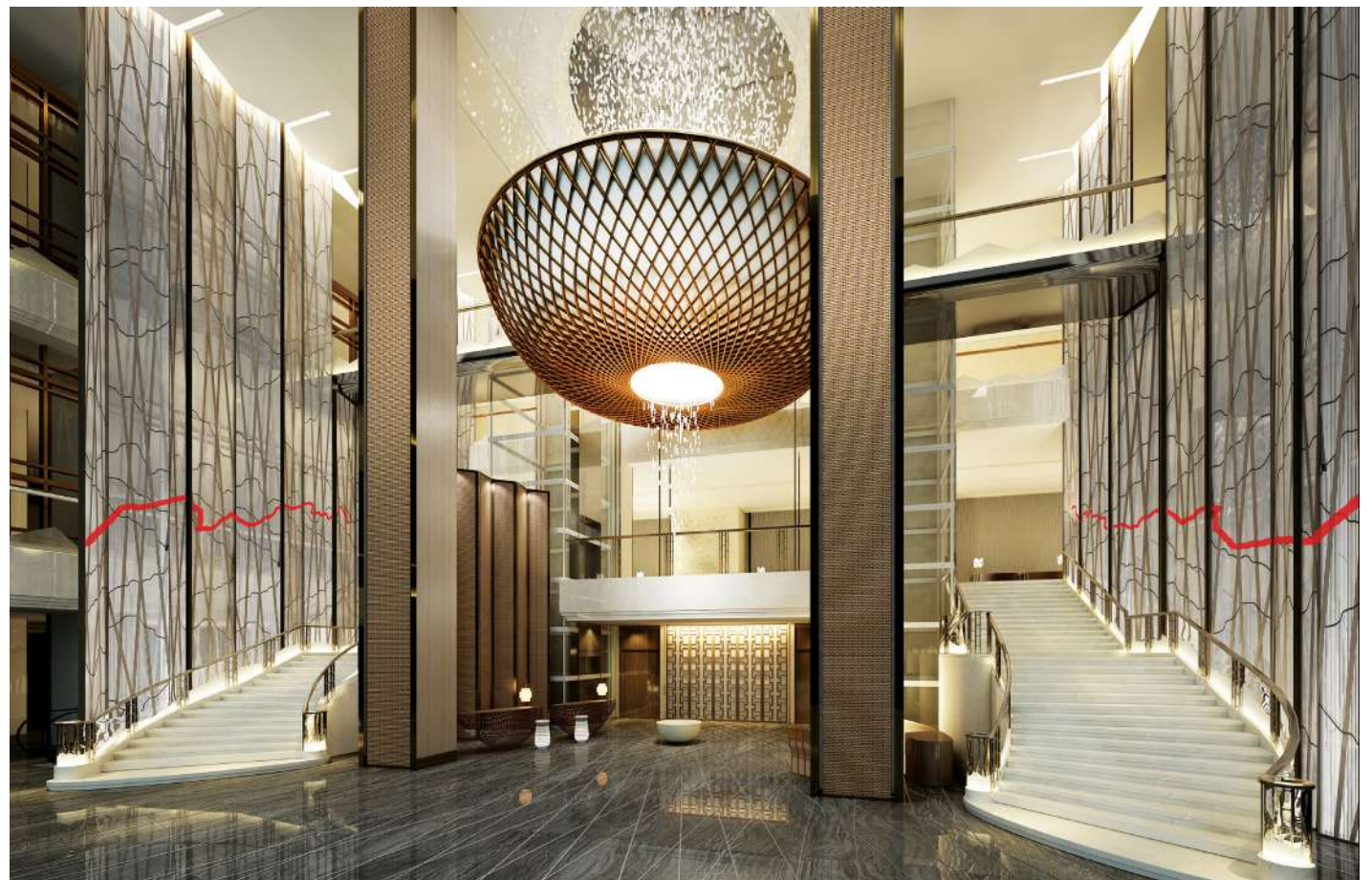
The 363 m² Gym on the 5th floor is equipped with state-of-the-art machines, world class technologies for fitness and physiotherapy.

Swisstouches La Luna Resort guarantees the perfect environment for your fitness activities, where you can train to boost your blood flow or relax with premium body treatments and therapies.



ELITE LIVING SPACES

At **Swisstouches La Luna Resort**, over 85% of our apartments will grant you a spectacular sea view, a living space inspired by modern design with fabulous, 5 star furniture.





TOTAL AREA

TOTAL AREA	35
LUXURY I	39
SUPERIOR ROOMT	40
PREMIUM SUPERIOR	41
DELUXE I	42
DELUXE II	43
DELUXE III	44
PREMIER DELUXE	45
PRESIDENT SUITE	46

* Images and information in this publication are accurate at the time of printing. It is not a commitment or part of the guarantee from the contract. Dimensions and images n be modified by competent regulators or developers due to actual requirements.

















TOTAL AREA

PROJECT OVERVIEW

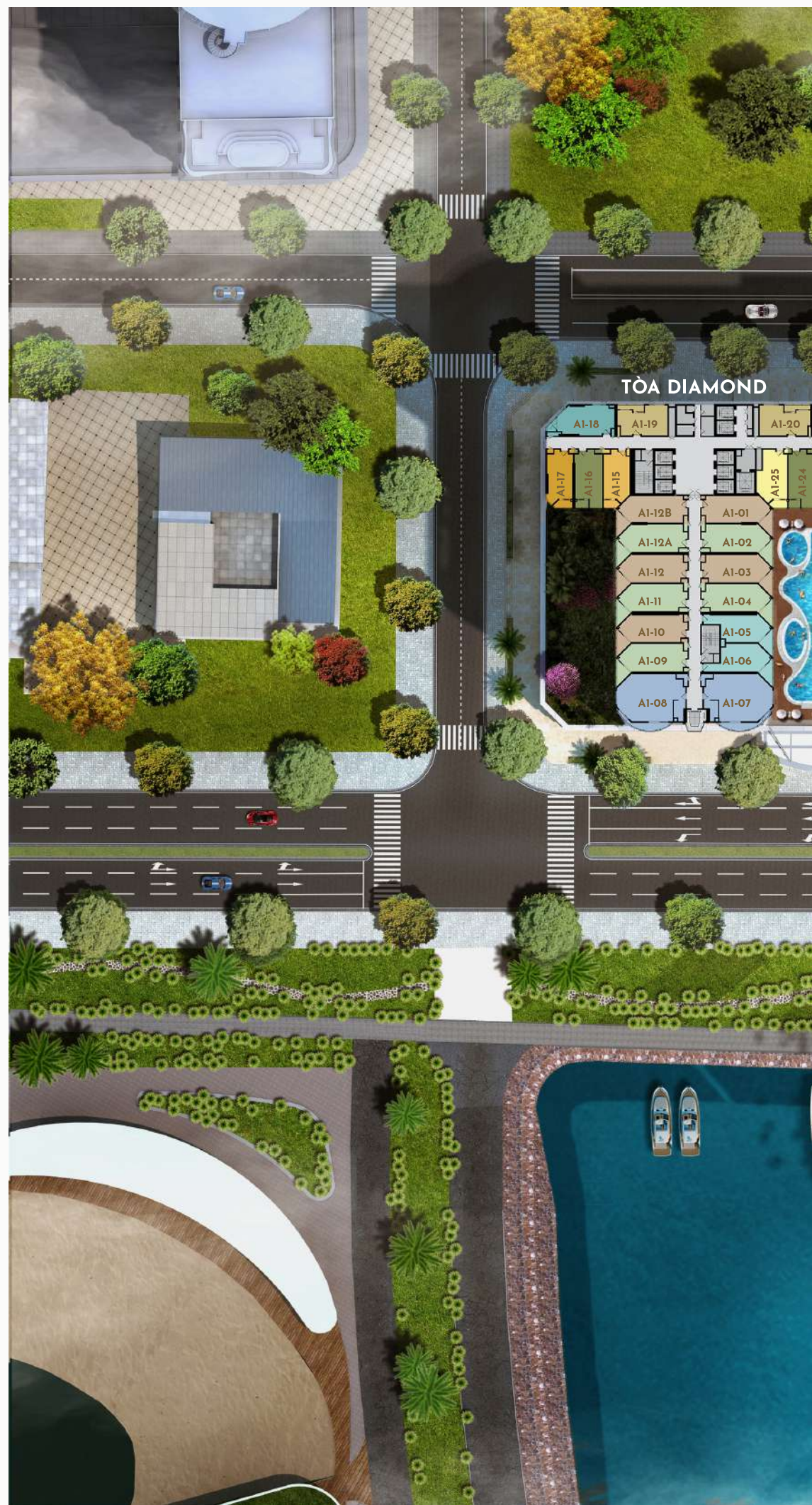
Total surface:	4,74 ha - including 4 areas A, B, C, D
Surface of A area:	5.965,5 m ² 2 towers of 36 floors - including 5 floors for commercial activities, parking
Surface of B area:	3.862,5 m ² 1 tower of 36 floors - including 5 floors for commercial activities, parking
Condotel specs:	1 Bedroom and Penthouse
Apartment size:	24 m ² - 390 m ²
Form of delivery:	Furnished international 5 star Condotel
Ownership:	Long term
Management team & Operator:	Swisstouches Hotels & Resorts
Design team:	GrandLand
Developer:	Marina Hotel JSC

APARTMENT DIMENSIONS:

 Luxury I 43 - 44.54m ²	 Deluxe I 31.58 - 36.03m ²
 Luxury II 43.08 - 44.96m ²	 Deluxe II 30.98 - 32.94m ²
 Luxury III 36.40 - 37.48m ²	 Deluxe III 34.34 - 34.58m ²
 Superior 33.51 - 36.98m ²	 Premier Deluxe 31.14 - 32.06m ²
 Premium Superior 37.41 - 38.95m ²	 President Suite 75.26 - 77.85m ²

SERVICES & FACILITIES:

 HELIPORT	 ANA MARINA
 AQUA BAY	 CASINO
 INFINITY POOL	 SKY BAR



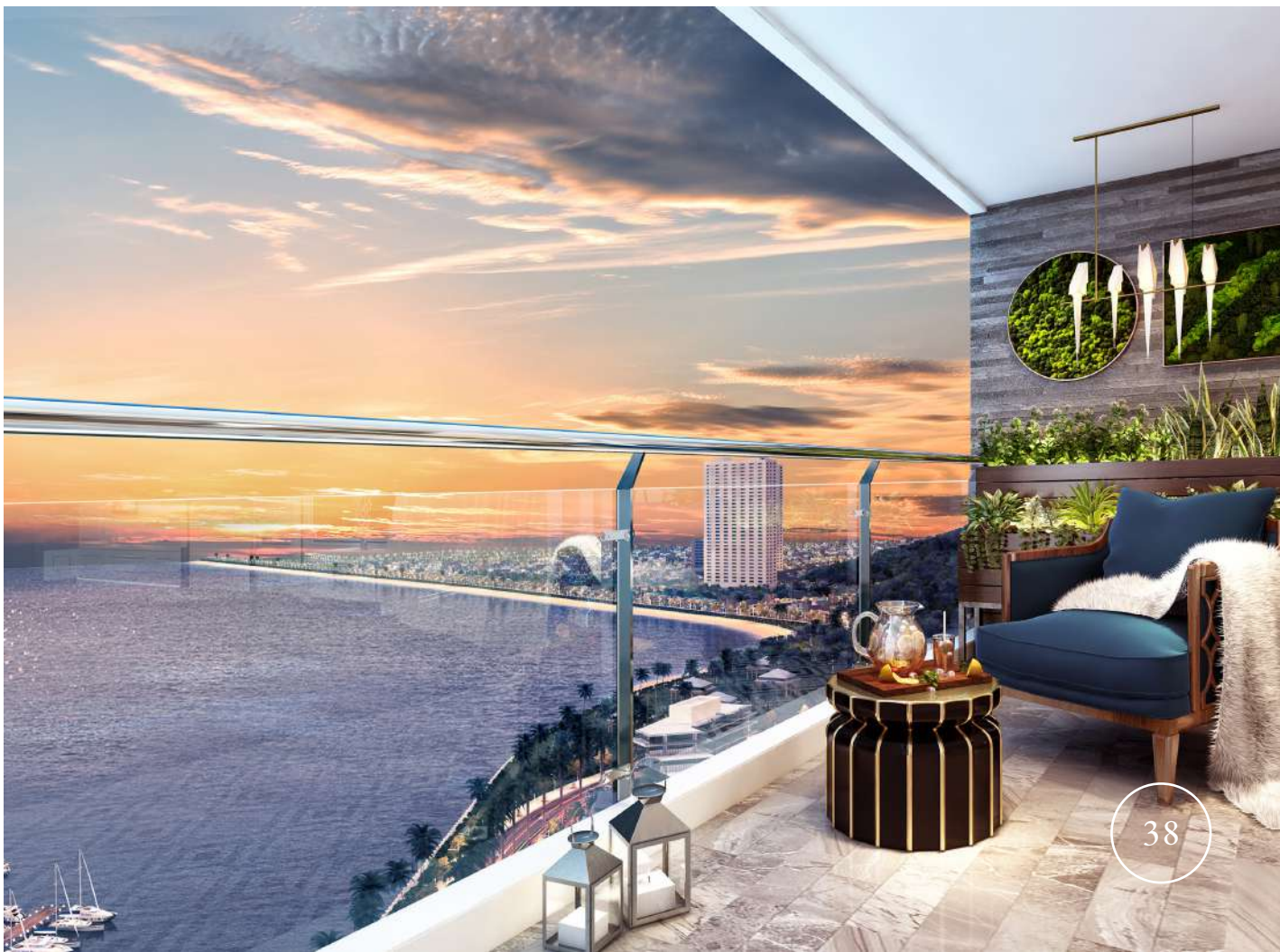


TÒA LUXURY

TÒA PLATINUM

B



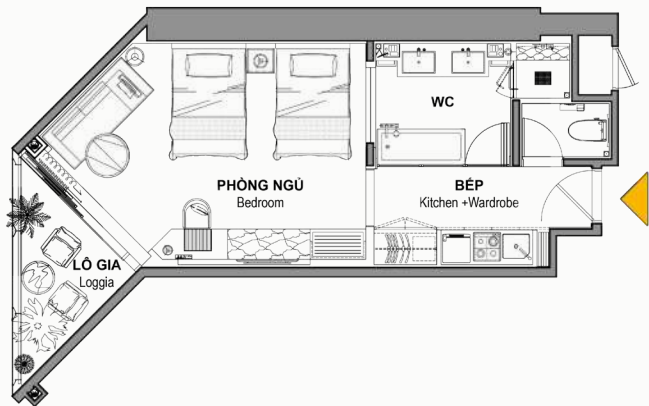


TYPICAL APARTMENT PLANS

LUXURY



TYPICAL PLAN:



DETAILS:

Total surface: 43.98 - 44.34 m²

Bedroom: 21.4 m²

Kitchen: 7.2 m²

Bathroom: 6.6 m²

WC: 1.6 m²

Balcony: 5.1 m²

SUPERIOR



DETAILS:

Total surface: 36.60 - 36.98 m²

Bedroom: 18.4 m²

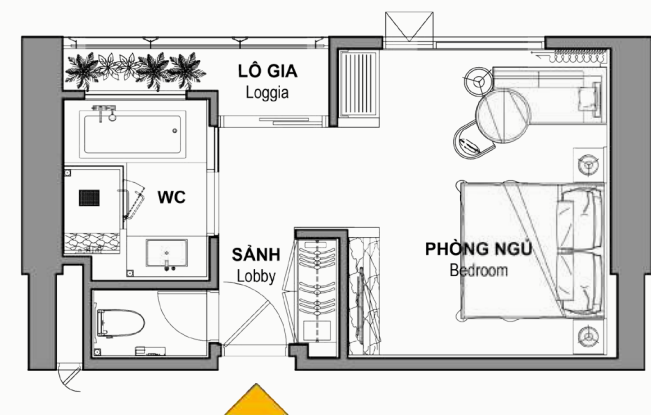
Kitchen: 5.9 m²

Bathroom: 5.0 m²

WC: 1.8 m²

Balcony: 4.2 m²

TYPICAL PLAN:

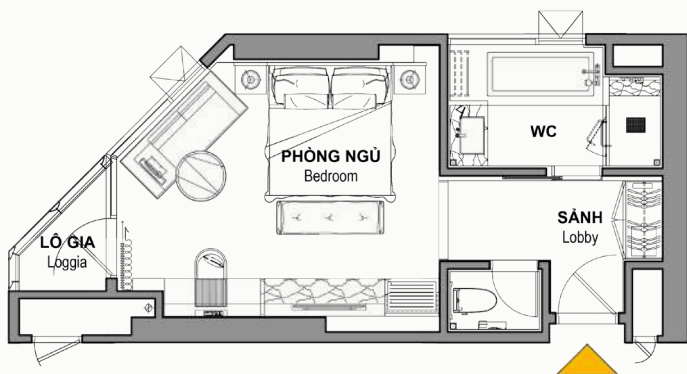


TYPICAL APARTMENT PLANS

PREMIUM SUPERIOR



TYPICAL PLAN:



DETAILS:

Total surface: 37.51 - 38.18 m²

Bedroom: 22 m²

Kitchen: 4.2 m²

Bathroom: 5.5 m²

WC: 1.5 m²

Balcony: 3.0 m²

CĂN DELUXE I



DETAILS:

Total surface: 31.72 - 32.08 m²

Bedroom: 18.6 m²

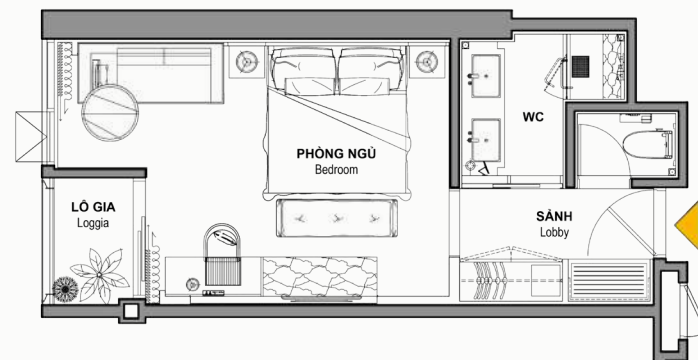
Kitchen: 4.5 m²

Bathroom: 3.9 m²

WC: 1.4 m²

Balcony: 1.9 m²

TYPICAL PLAN:

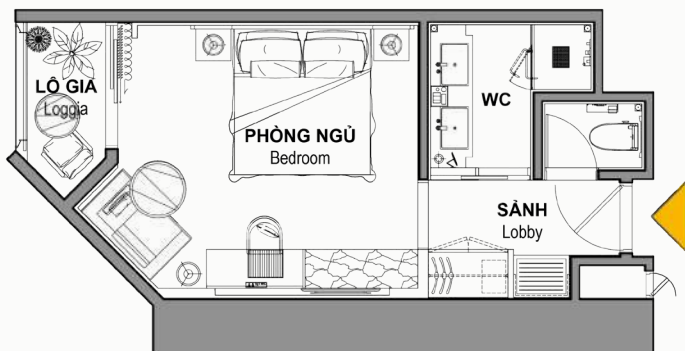


TYPICAL APARTMENT PLANS

DELUXE II



TYPICAL PLAN:



DETAILS:

Total surface: 32.40 - 32.94 m²

Bedroom: 16.8 m²

Kitchen: 4.4 m²

Bathroom: 3.9 m²

WC: 1.5 m²

Balcony: 3.0 m²

CĂN DELUXE III



DETAILS:

Total surface: 34.58 m²

Bedroom: 19.5 m²

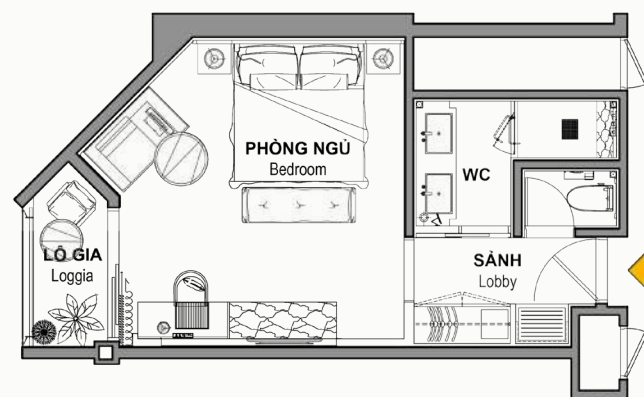
Kitchen: 4.6 m²

Bathroom: 4.3 m²

WC: 1.2 m²

Balcony: 3.3 m²

TYPICAL PLAN:

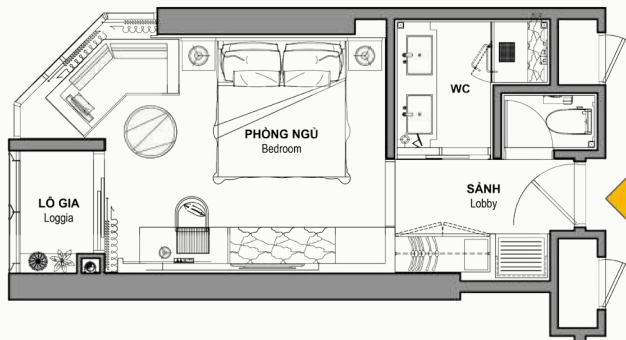


TYPICAL APARTMENT PLANS

PREMIER DELUXE



TYPICAL PLAN:



DETAILS:

Total surface: 31.14 - 31.78 m²

Bedroom: 16.6 m²

Kitchen: 4.9 m²

Bathroom: 3.7 m²

WC: 1.4 m²

Balcony: 3.2 m²

CĂN PRESIDENT SUITE



DETAILS:

Total surface: 76.85 - 77.38 m²

Bedroom: 23.8 m²

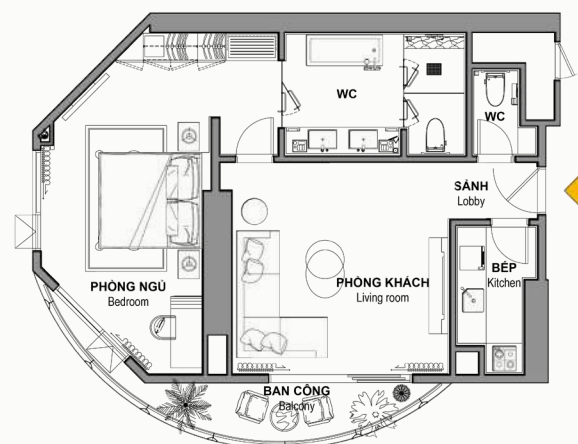
Kitchen: 7.5 m²

Bathroom: 8.5 m²

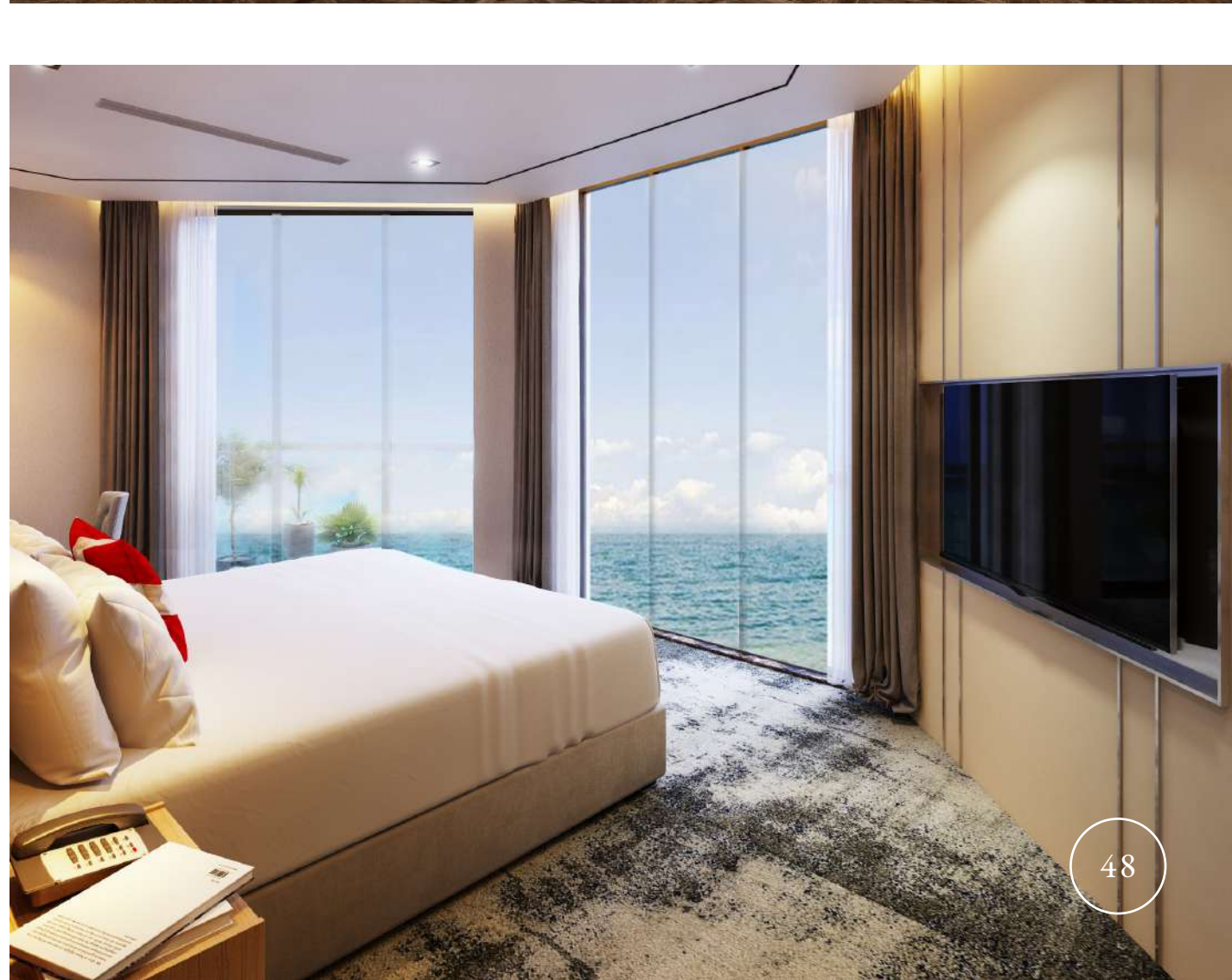
WC: 2.1 m²

Balcony: 8.5 m²

TYPICAL PLAN:









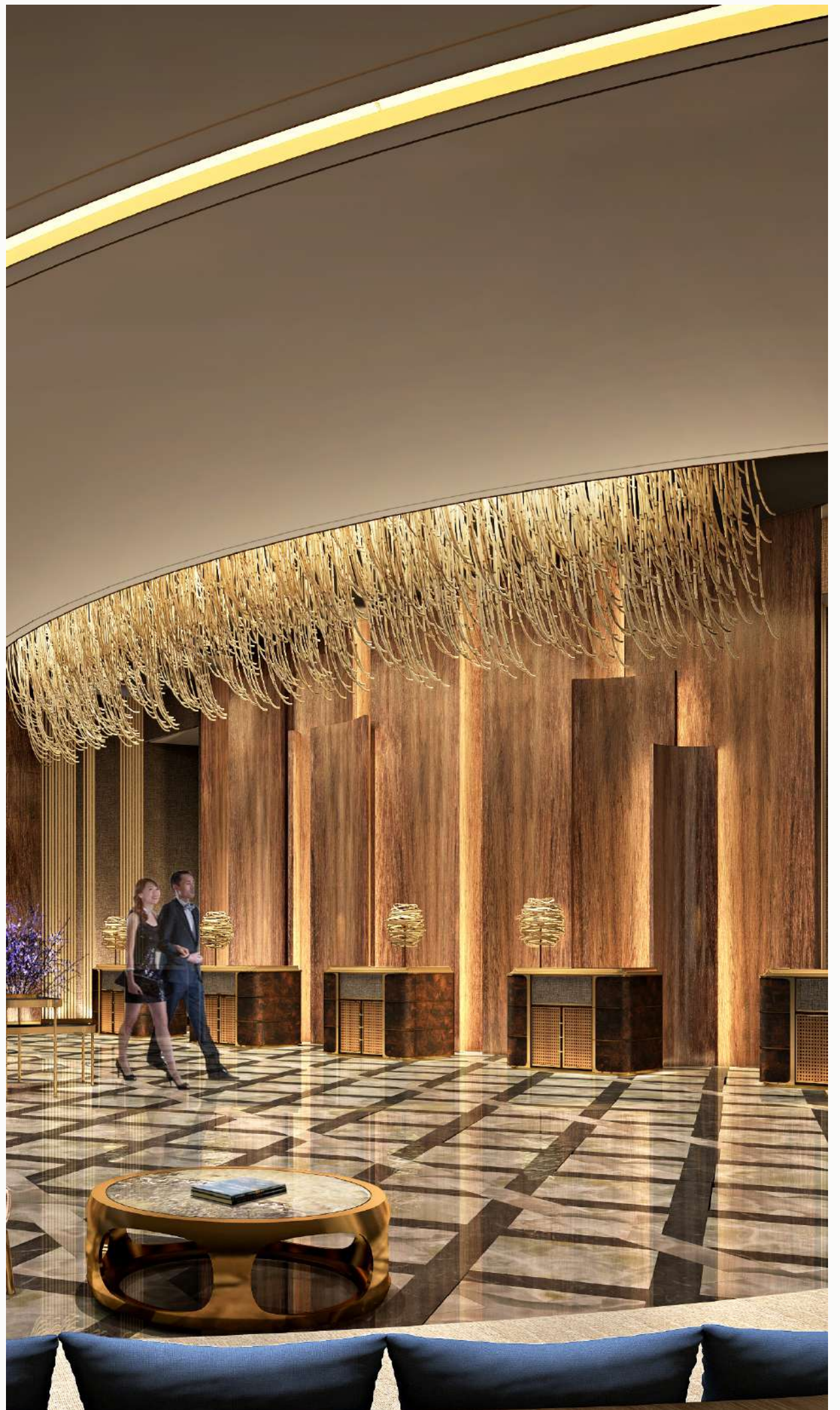
DEVELOPER

Proudly invested and developed by Marina Hotel JSC, the golden project **Swisstouches La Luna Resort** is designed to be a world class luxury hotel, to provide guests with utmost perfection in quality and services.



DESIGN CONSULTANCY

GrandLand is one of the leading design firms in Hong Kong with over 20 years of experience and 1,500 design professionals all over the world. The company has won 500 Hong Kong and international design awards. In recent years, **GrandLand** maintains close cooperation with world renown design companies such as WATG (USA), ABC (USA), HASSELL (Australia) và HID (Germany) to work on breakthrough and 5 star projects. **GrandLand** remarkable design projects include: the Guangzhou Grandview Marriott Hotel, the Huizhou Egret Lake Agile Sheraton Resort Hotel, the Shan Hai Tian Marriott Hotel Sanya, the Huzhou Sheraton Hot Spring Resort Hotel...





MANAGEMENT & OPERATOR

Swisstouches Hotels & Resorts Group is a leading hotel management group with in-depth experience in operating international 5 star hotels and resorts in Switzerland, Germany, India and China.

Swisstouches is present at over 18.000 hotels worldwide and is working with 500,000 travel agencies to create a global network ensuring **Swisstouches** hotels occupancy around 70%.

In particular, **Swisstouches** is also the first hotel management group to run the prestigious HTMi Academy – one of the best training and human resources centers for hospitality management in Switzerland and worldwide.





5-star Swisstouches Hotel
Nanjing, China



5-star Swisstouches Residences Guangzhou
Guangzhou, China



Experience world class relaxation at

Swisstouches



By the Nha Trang bay, where the sun shines 300 days a year!



024 2222 6789



sales@swisstoucheslaluna.com



swisstoucheslaluna.com



Vinh Hoa Urban Center, Vinh Hoa Ward, Nha Trang City

Swisstouches

